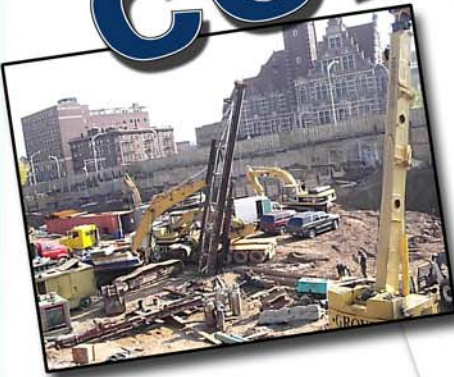


**HELICAL PIER
SYSTEMS**

**Innovative.
Engineered.**
deep foundation
applications

COMMERCIAL CONSTRUCTION

- ✓ **Tieback Anchors**
- ✓ **Soldier Piles**
- ✓ **High Capacity Foundations**
- ✓ **Boardwalks**
- ✓ **Pipeline Anchors**
- ✓ **Pipe Rack Support**
- ✓ **Vessel Support**
- ✓ **Soil Nails**



Helical Pier Systems
certified installer:

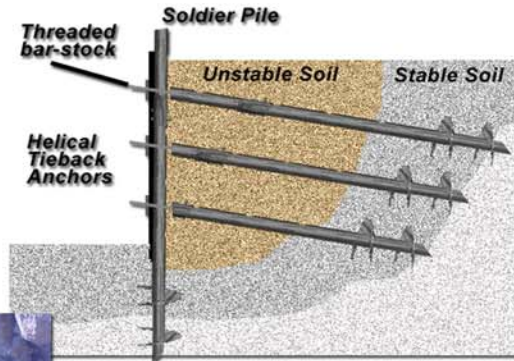
www.helicalpiersystems.com



Helical Tieback Anchors and Soldier-Piles

Construction using tieback anchors for soldier-piles/waler walls are job-specific. Load requirements and soil conditions determine anchor sizing. HPS Engineering and Support works with Project Owners to ensure the correct anchor configuration and capacity are selected and delivered. HPS supplies a variety of terminations and tieback cap configurations catering to the specific requirements of any project.

Soldier-pile installation and removal could not be any quicker. No vibration or spoils to remove. Ideal for any waler walls especially in populated locations with existing infrastructure.



U-Shaped Tieback Cap

- Install and test over 30 anchors per day
- Save on equipment and labour costs
- High tensile load capacities
- Excellent for below-water-table applications

Wind Tower, Powerlines and other Tower Foundations



Wind Tower Foundation

Construction of tower foundations is fast and cost effective. Large capacity piles can be installed and capped in any Engineer designed configuration to ensure foundation is stable when stressed under lateral and tensile forces. Load requirements and soil conditions determine pile sizing and installation configuration. HPS Engineering and Support works with Project Owners to ensure the correct configuration and capacity are selected and delivered.



Helical Pier System Commercial Construction advantages:

- *Cost effective*
- *Fast and efficient installation and / or removal*
- *No unwanted vibration or damage to neighboring structures*
- *Installation limited access*
- *No concrete or grout required*

Boardwalks, Docks and Decks

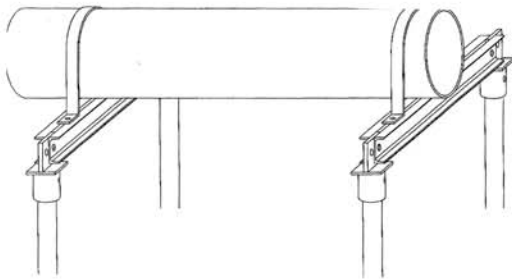


Construction of boardwalks using helical piers is ideal. HPS products are environmentally friendly and can be installed in sensitive areas with minimal disturbance. HPS Engineering and Support works with Project Owners to ensure the correct product configuration and capacity are selected and delivered.



Dock and Deck construction has been completed using two methods, fixed and floating. Fixed docks are constructed by installing multiple rows of piers, starting on shore then working out into the body of water. The deck is placed and secured directly onto the fixed piers using special top caps. Floating docks are constructed by installing piers that are spaced and staggered. The floating deck component is secured to the piers in a fashion that allows the floating deck to move up and down the pier.

Pipeline Anchors and Pipeline Supports



Pipeline support is critical in the Oil and Gas Industry. Buried pipelines need to be anchored to overcome buoyancy. HPS anchors combined with special tiedown hardware allow for quick installation and pipeline anchoring.

Pipelines above surface are required to be supported due tensile, compressive and lateral loads. HPS designed support beams and tiedown hardware and connector caps make installation quick and easy.

**HELICAL PIER
SYSTEMS**

toll free : 1-866-497-8175
www.helicalpiersystems.com

HELICAL PIER SYSTEMS LTD.

TOLL FREE : 1-866-497-8175

FAX : 1-866-668-9920

www.helicalpiersystems.com

